

Connecting Intermec/Honeywell Printers to Windows 7 via Network

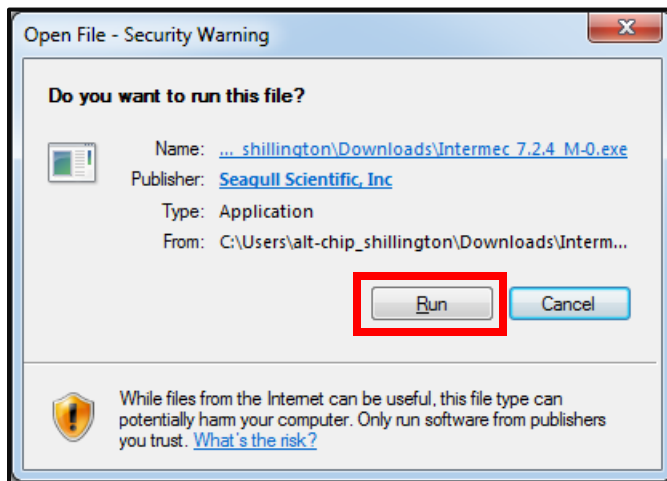
The following instructions are for all DPAS supported Intermec printers.

The Intermec/Honeywell InterDriver EasyCoder PD42 (203 dpi) - IPL driver has been tested and recommended for DPAS use. This driver will support all Intermec/Honeywell printers approved by DPAS.

Please visit the **Support > Software and Hardware** section of the [DPAS Support Web Site](#) for a listing of approved DPAS printers.

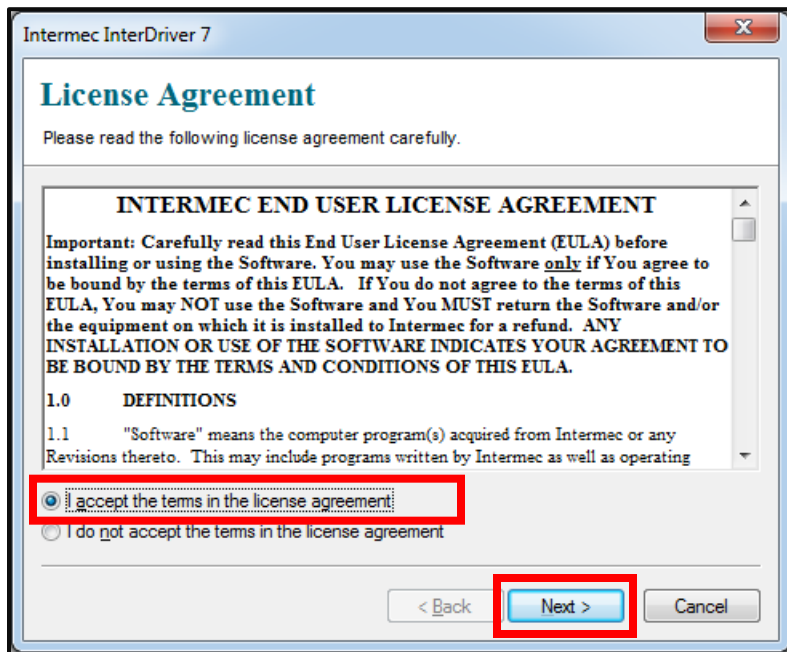
Downloading Driver Files

1. In your browser, navigate to <https://www.honeywellaidc.com/products/printers/software>
2. Choose **Run**.

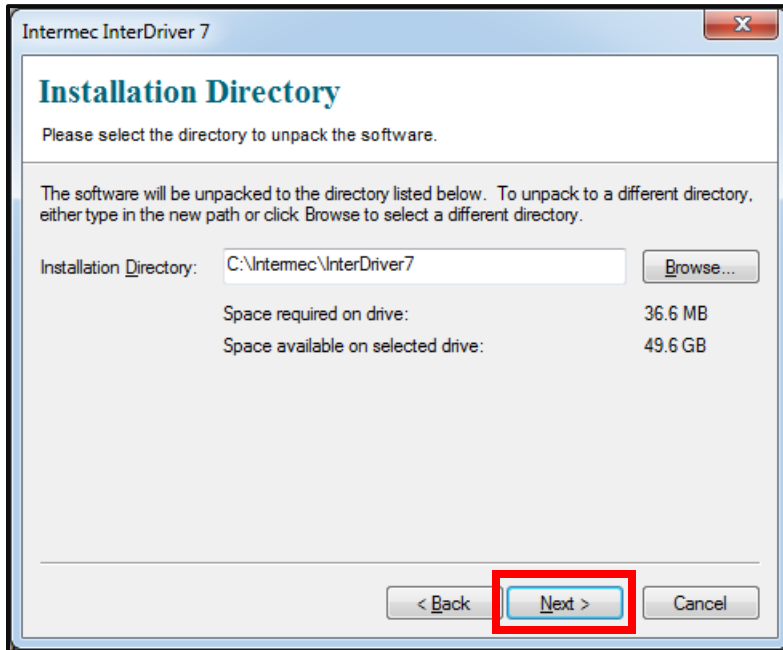


3. If you receive a security warning, click **Run**.

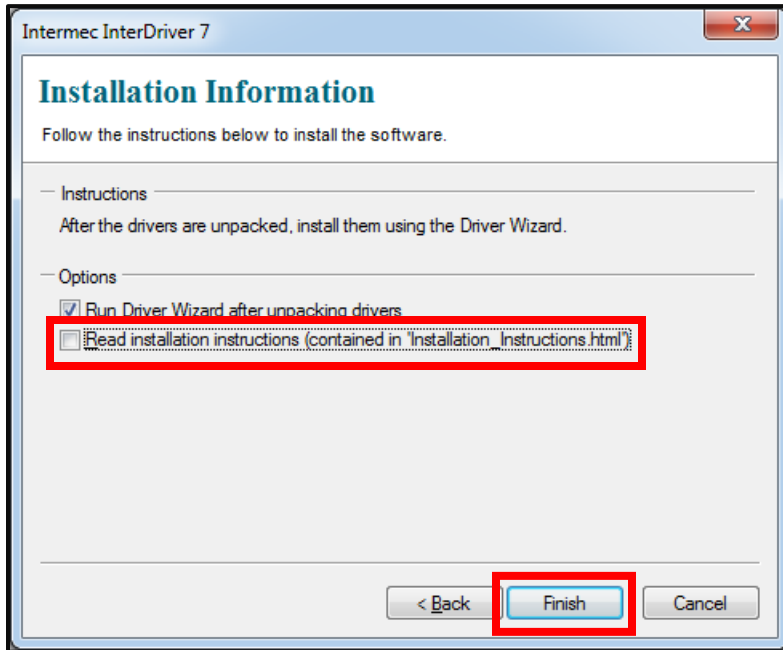
4. Select the **I accept the terms in the license agreement** radio button and choose the **Next** button.



5. Leave the **Installation Directory** at its default and select the **Next** button.



6. Deselect the **Read installation instructions** checkbox and choose the **Finish** button.

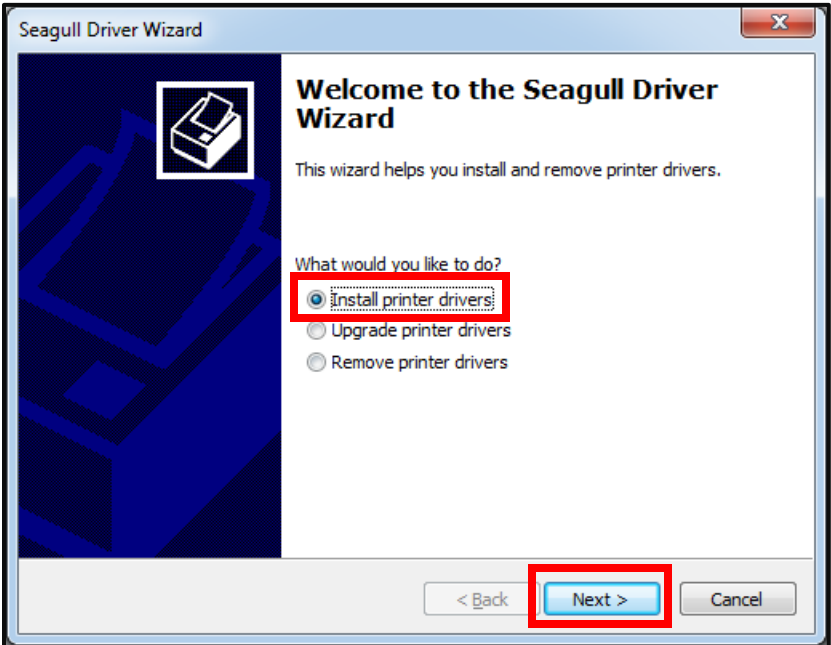


7. Once all files are installed, the **Seagull Driver Wizard** will display.

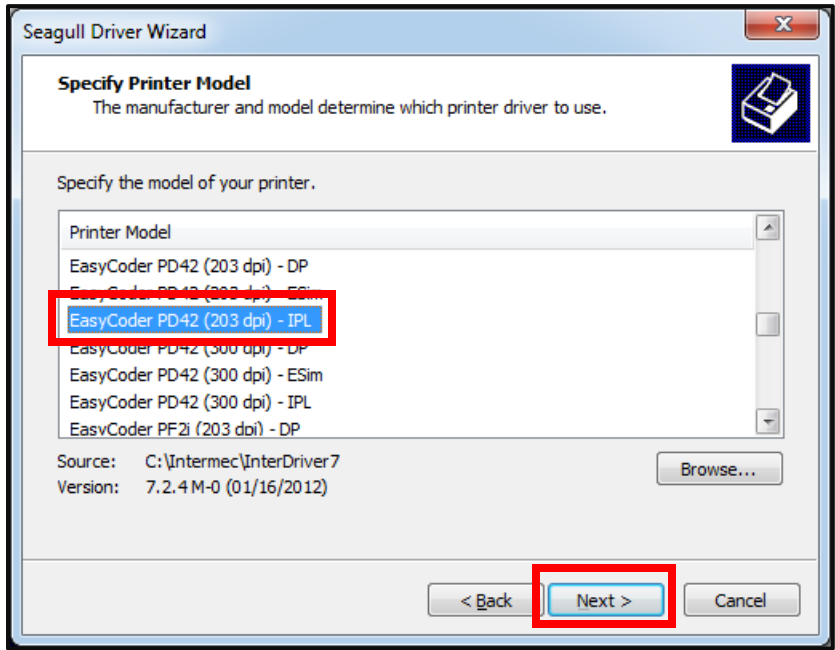
Installing using the Seagull Driver Wizard

If you are not continuing from the initial download of the InterDriver, navigate to C:\Intermec\InterDriver7 and launch DriverWizard.exe.

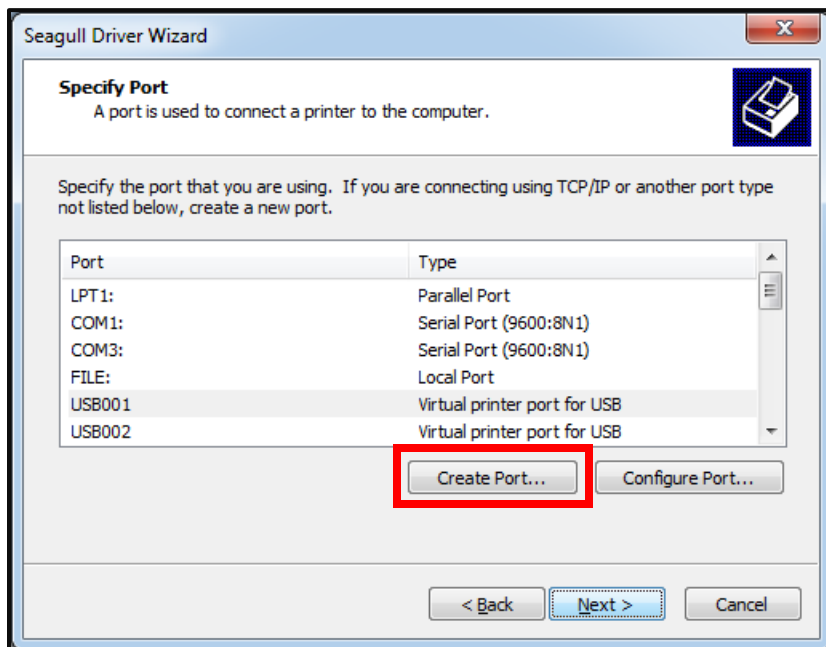
1. Select **Install Print Drivers** radio button and choose the **Next** button.



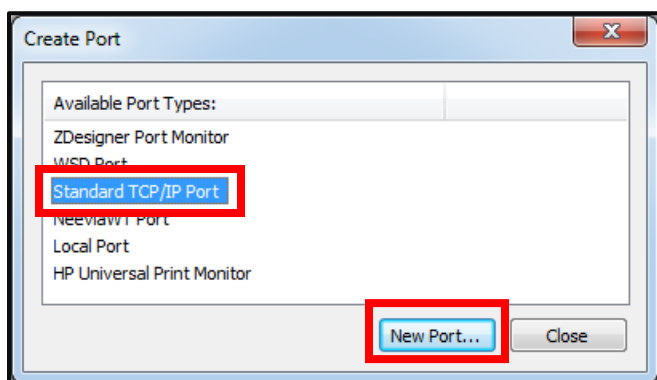
2. Select **EasyCoder PD42 (203 dpi) – IPL** from the **Printer Model** and choose the **Next** button.



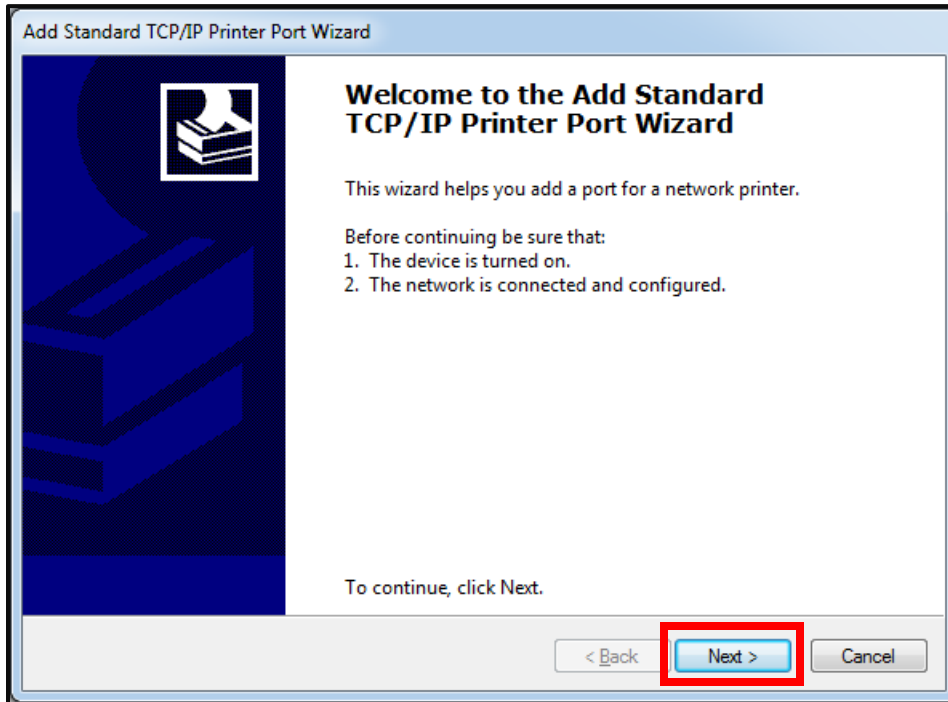
3. Select the **Create Port...** button



4. Select **Standard TCP/IP Port** and choose the **New Port...** button.



5. On the **Add Standard TCP/IP Printer Port Wizard** dialog box, select the **Next** button.





6. Enter the IP address for your printer in the **Printer Name or IP Address** field and select the **Next** button.

Add Standard TCP/IP Printer Port Wizard

Add port
For which device do you want to add a port?

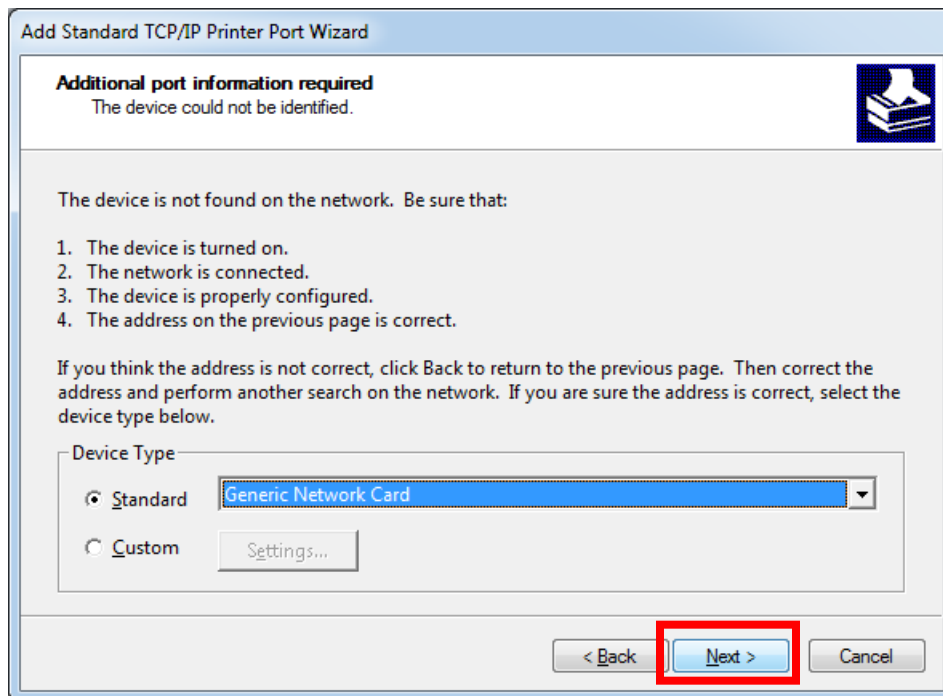
Enter the Printer Name or IP address, and a port name for the desired device.

Printer Name or IP Address: 158.8.1.100

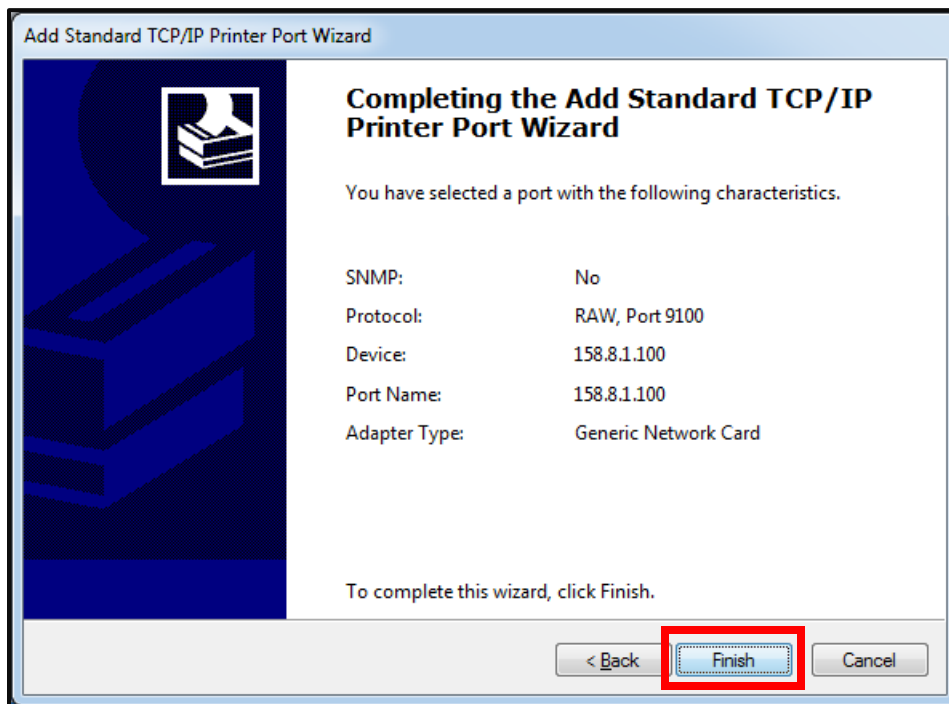
Port Name: 158.8.1.100

< Back Next > Cancel

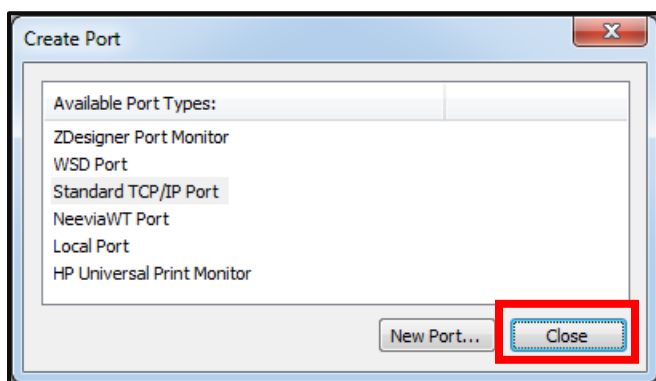
7. Leave the **Standard** radio button at its default and select the **Next** button.



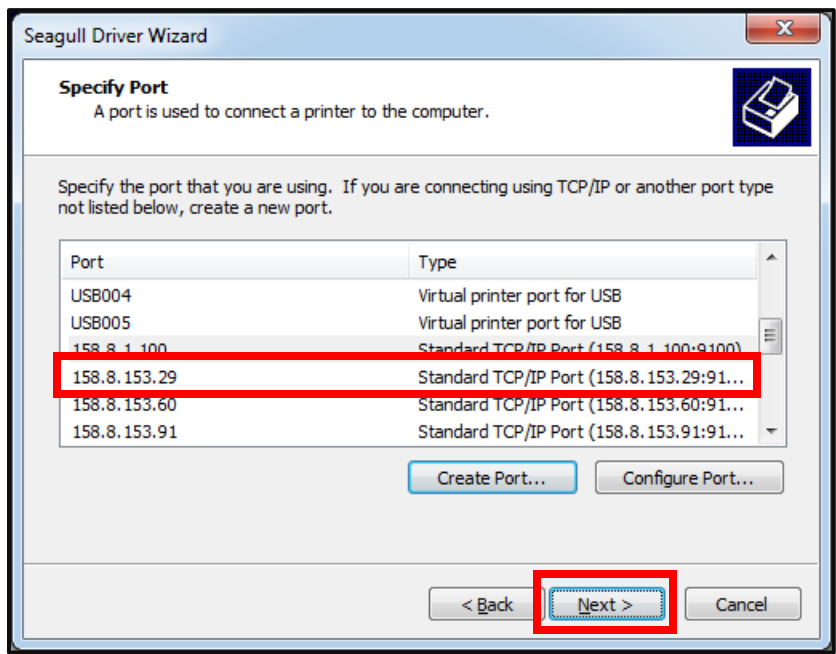
8. Select the **Finish** button.



9. Select the **Close** button.



10. Select the newly created IP Address from the **Port** listing and choose the **Next** button.





11. Enter a meaningful printer name or leave the default and select the **Next** button.

Seagull Driver Wizard

Specify Printer Name
Names are used to identify the printer on this computer and on the network.

Enter a name for this printer.

Printer name: EasyCoder PD42 (203 dpi) - IPL

Use this printer as the default printer

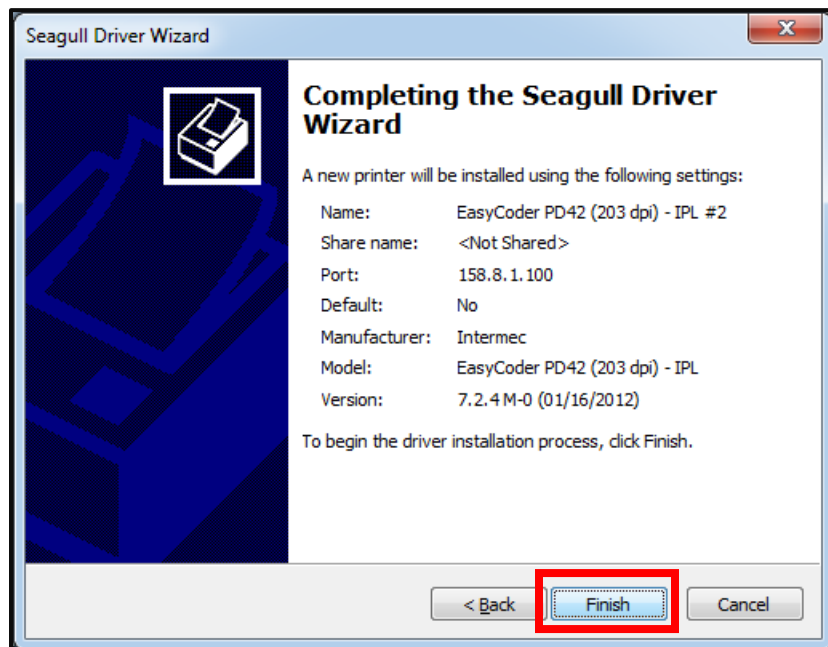
Specify whether or not you want to share this printer with other network users. When sharing, you must provide a share name.

Do not share this printer

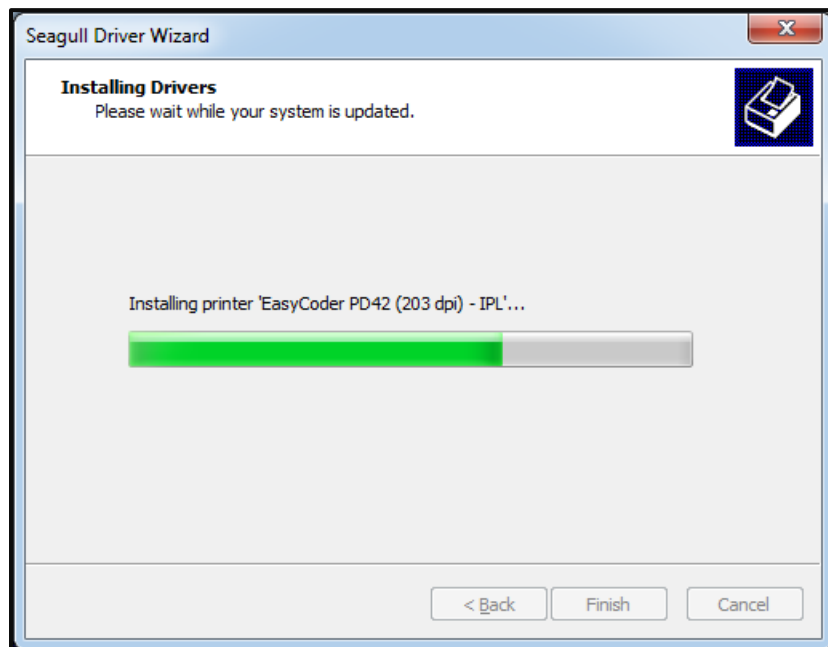
Share name: EasyCoder_PD42_(203_dpi)_-_IPL

< Back Next > Cancel

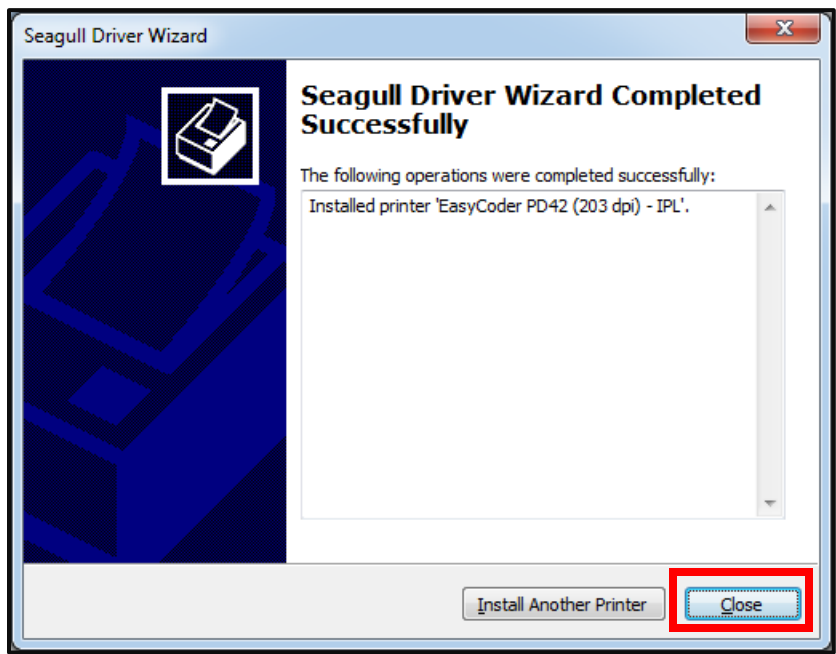
12. Select the **Finish** button.



13. The driver installs.



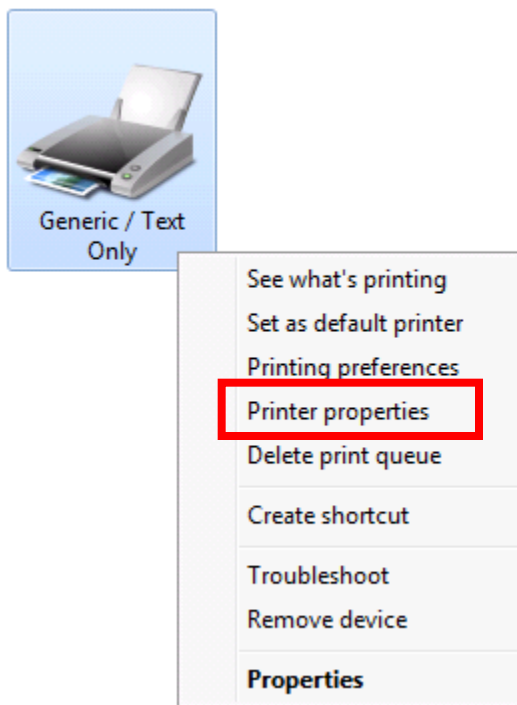
14. Select the **Close** button.



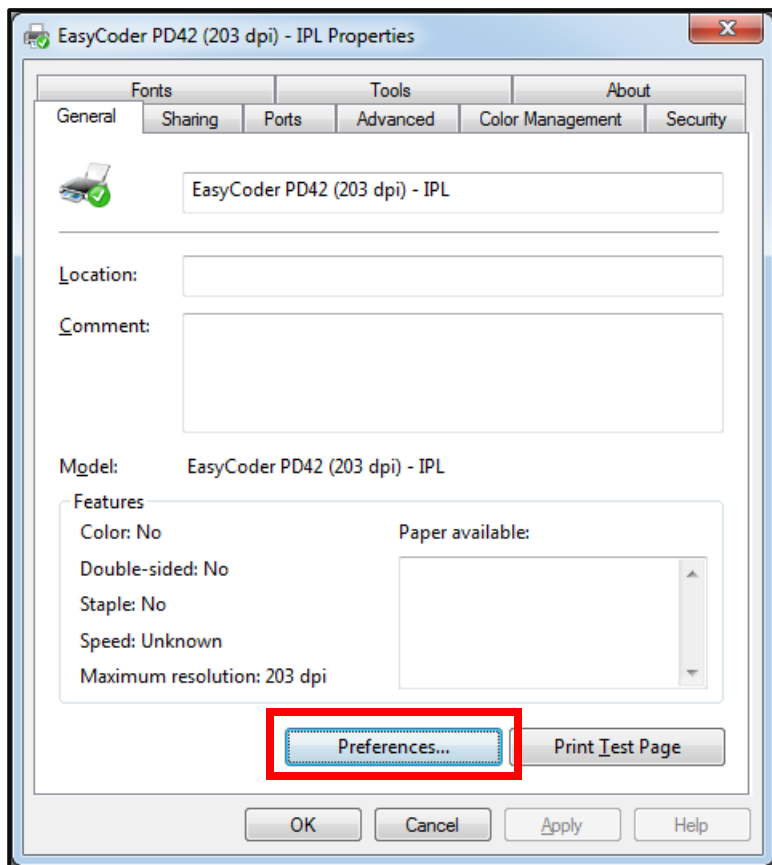


Configuring the Intermec/Honeywell InterDriver

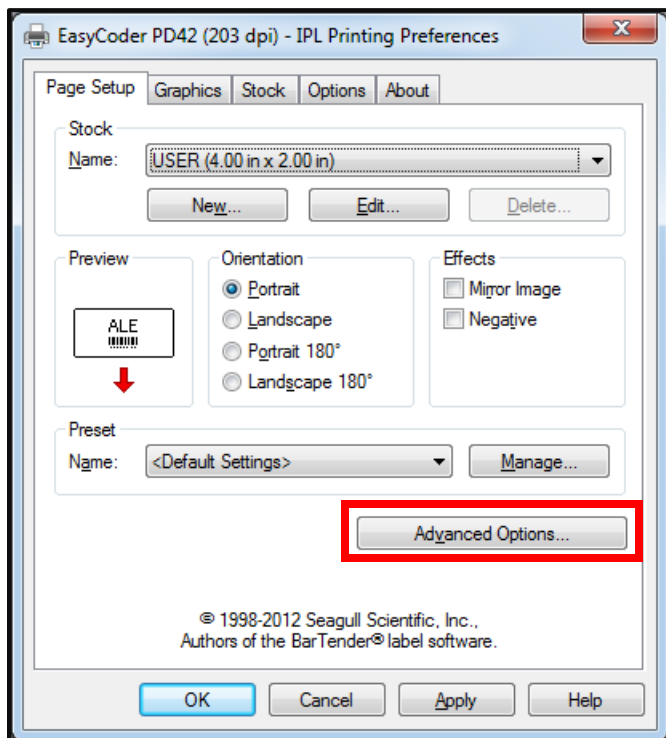
1. Go to **Start > Printers and Faxes**.
2. Right-click on the printer name entered in the “Installing using the Seagull Driver Wizard” section and select **Printer properties**.



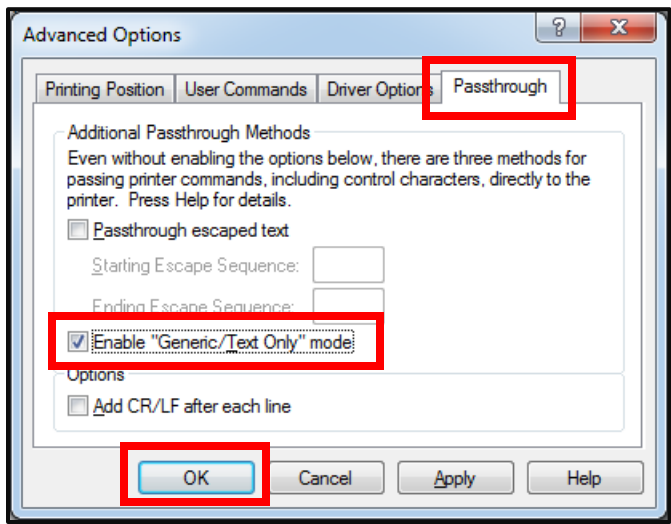
3. Select the **Preferences...** button at the bottom of the **General** tab.



4. Select the **Advanced Options...** button on the **Page Setup** tab.



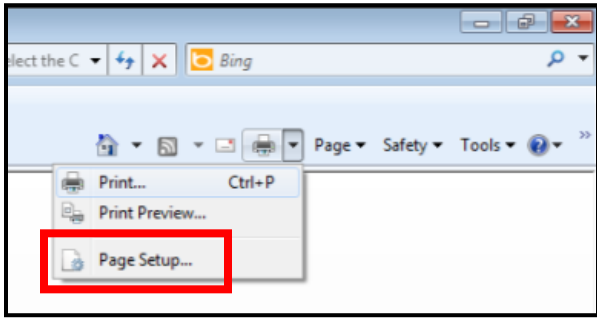
- 5. Select the **Passthrough** tab.
- 6. Select the **Enable "Generic/Text Only" mode** checkbox and choose the **OK** button.



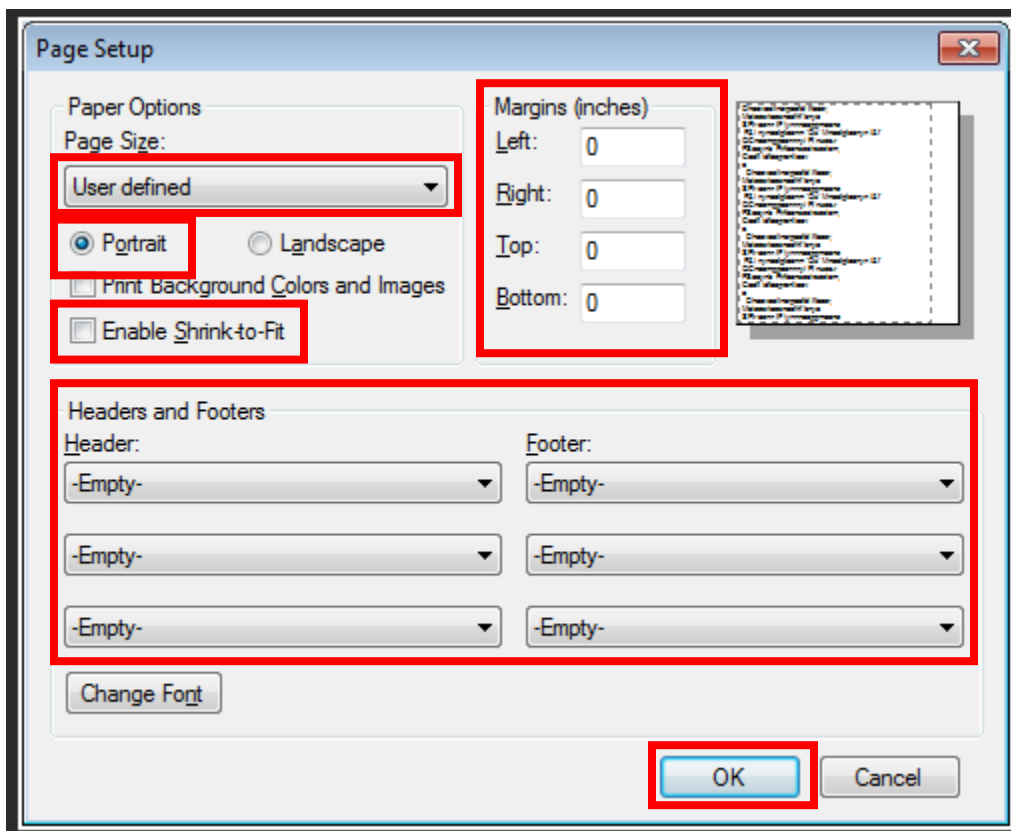
- 7. Select the **OK** button on the next two dialog boxes to complete the process.

Configuring Internet Explorer

1. Login to DPAS.
2. Navigate to **AIT > Print Labels**.
3. *****IMPORTANT***** Print a label from Web DPAS.
4. Select the **Print Menu** at the top of Internet Explorer.
5. Select **Page Setup**.



6. Verify the **Page Size** is set to *User defined*.
7. Verify the **Orientation** is set to *Portrait*.
8. Uncheck the **Enable Shrink-to-Fit** checkbox.
9. Change the **Left, Right, Top** and **Bottom** Margin settings to *0*. Margins may adjust after the **OK** button is selected.
10. Change all **Header** and **Footer** fields to *-Empty-*.
11. Select **OK** on the **Page Setup** dialog box.



12. You are now ready to print labels.